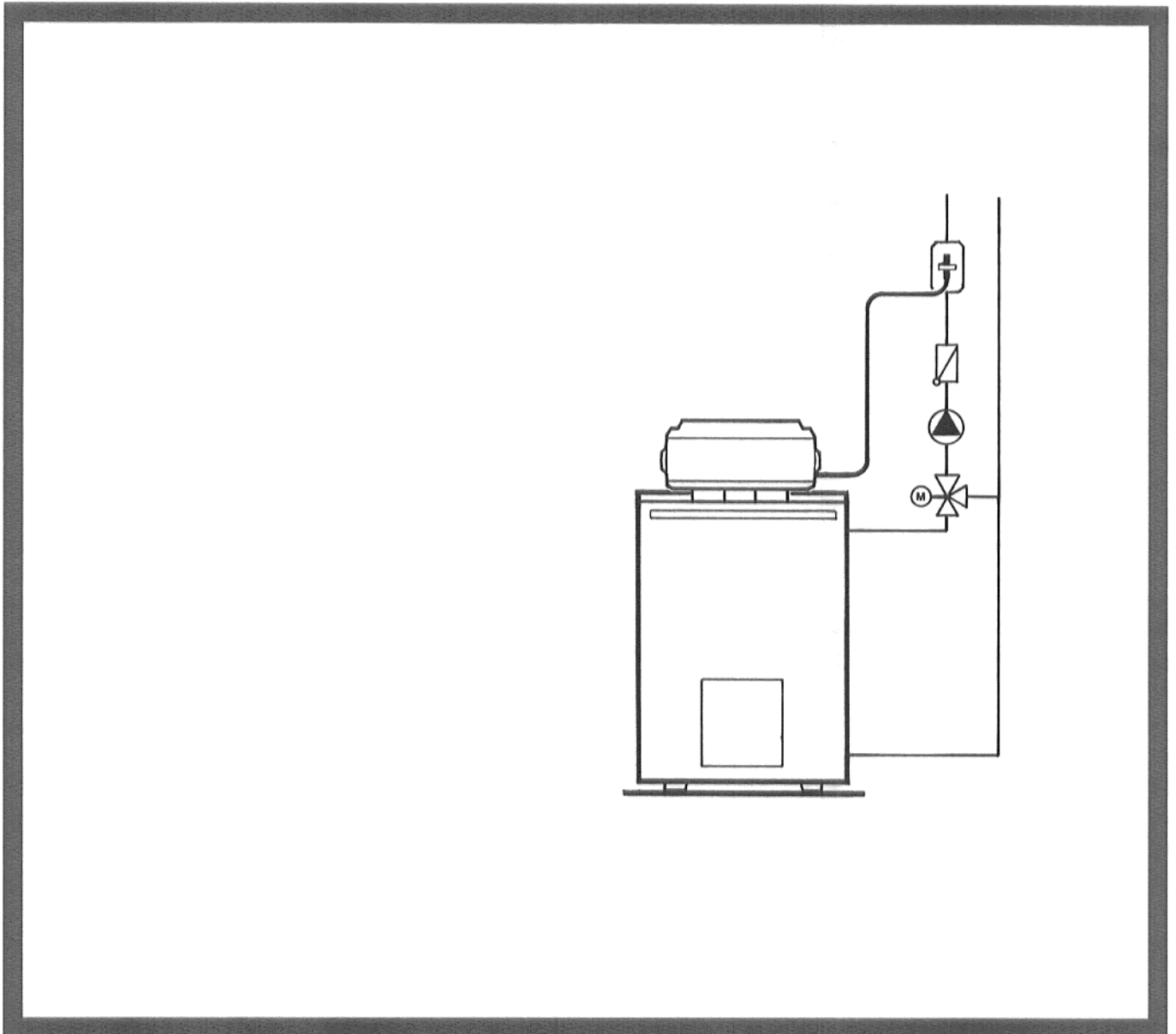


Fitting instructions

for contact temperature sensor



Fitting sequence

1. The contact temperature sensor can be used for pipes up to a maximum diameter of R 2½" (DN 65).
2. Mount the temperature contact sensor directly behind the mixing valve and the heating circuit pump on the heating flow pipe. (Fig. 1)

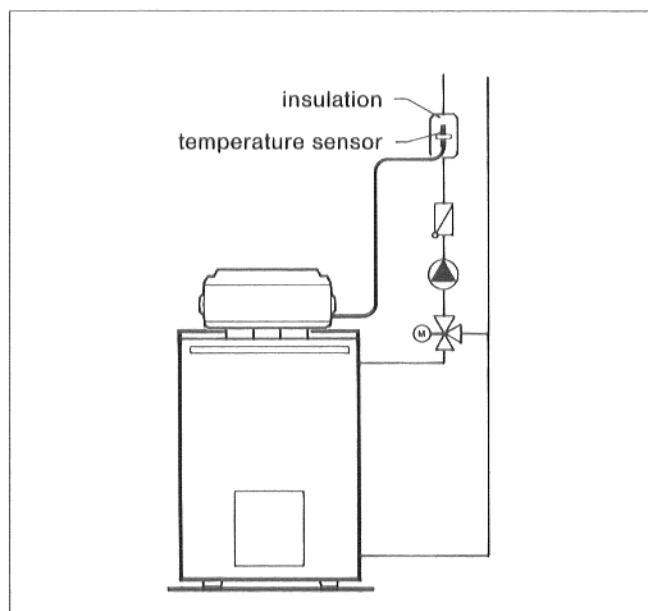


Fig. 1

3. Apply the thermal conducting paste supplied between the heating pipe and the contact sensor.
4. Insert the tension spring in the mounting plate and wrap it around the heating flow pipe.
Press the mounting plate and the sensor firmly onto the heating flow pipe. Tighten the tension spring and insert it in the mounting plate. (Fig. 2)

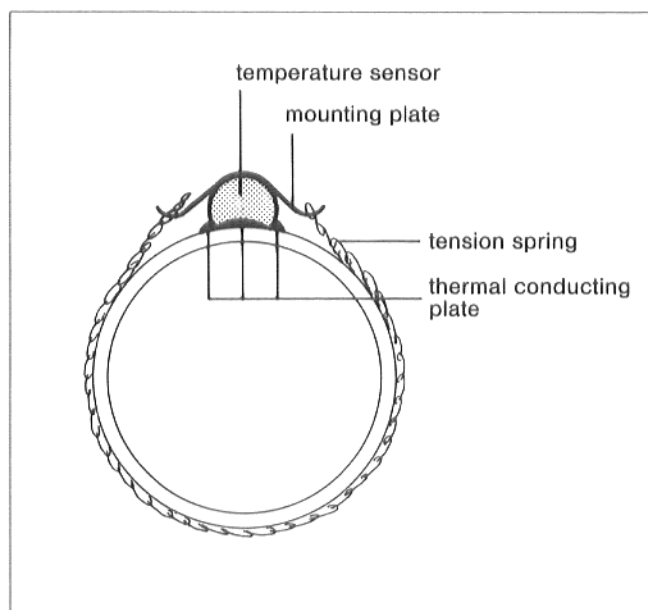


Fig. 2

5. The temperature contact sensor has to be insulated against cooling with insulation material at least 20 cm long. (Fig. 3).

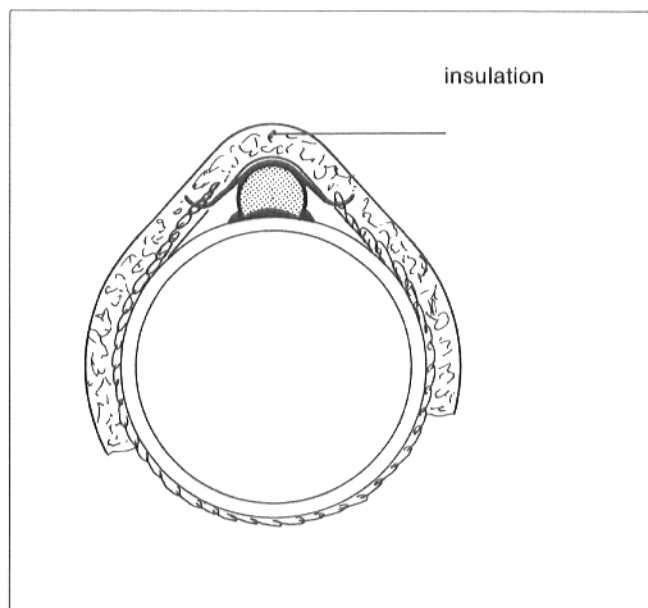


Fig. 3

Subject to change without notice !